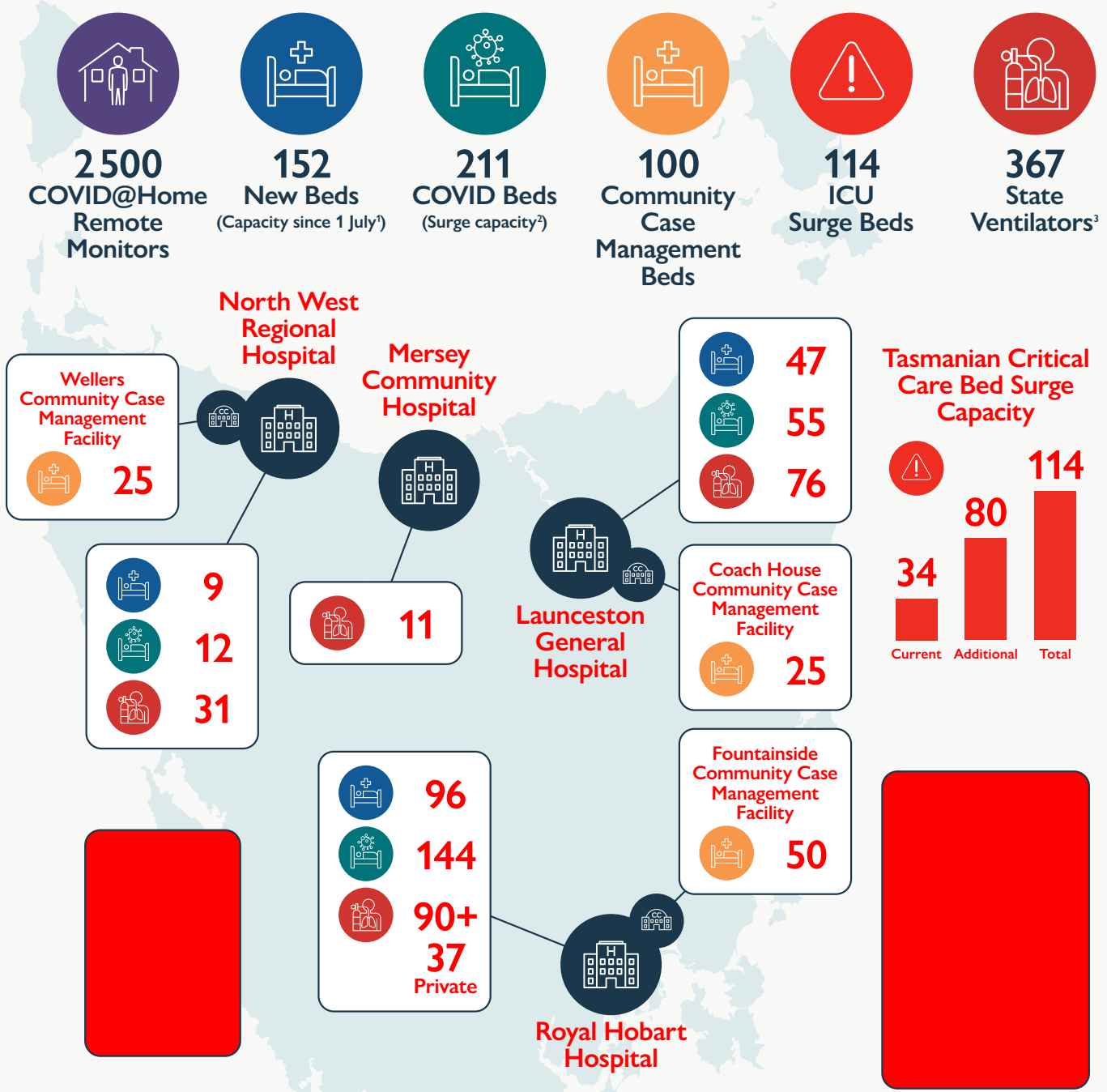




# Hospital Preparedness

December 2021



<sup>1</sup> New bed capacity includes 35 contracted Private beds.

<sup>2</sup> COVID surge capacity (non-critical care) as triggered under Major Hospital Escalation Management Plans (South, North, North West).

<sup>3</sup> 267 ventilators are already available, with 100 ventilators to be supplied via Commonwealth contract.