



I feel unwell what should I do?



1. Have symptoms?



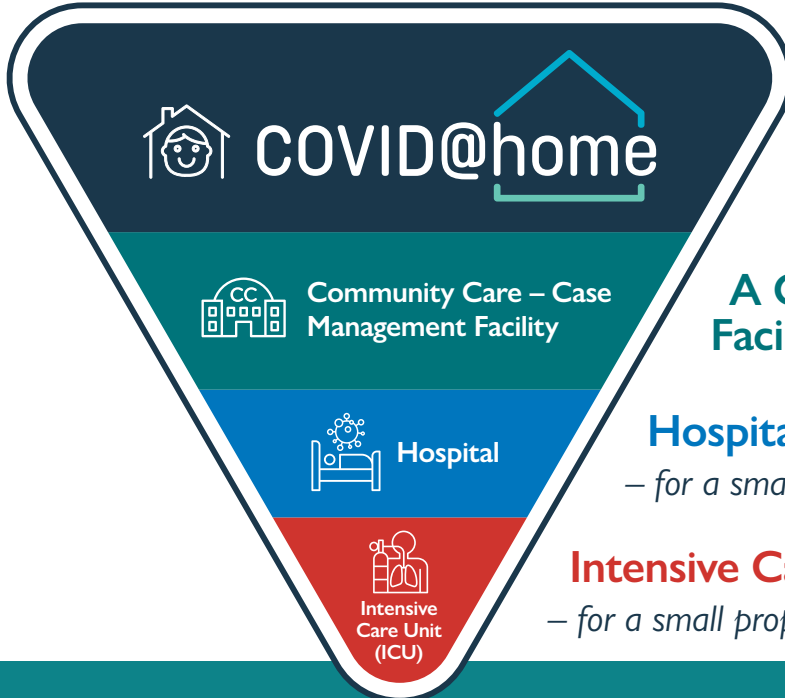
2. Arrange a COVID test



3. Self isolate at home while waiting for results



4. If you have a positive test result, the Department of Health will contact you to undertake an assessment



The COVID@home Program
– for the majority of Tasmanians

A Community Case Management Facility – for some Tasmanians

Hospital treatment
– for a small minority of Tasmanians

Intensive Care Unit treatment
– for a small proportion of critically unwell Tasmanians

Ensuring the right level of care for all Tasmanians